

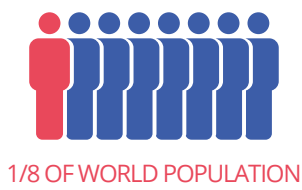
Family doctors: look closely at your patients' mouths

Periodontitis general facts

Severe periodontitis is the **sixth most common** disease globally



1.1 billion cases of severe periodontitis

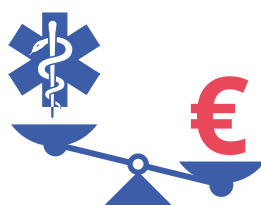


1/8 OF WORLD POPULATION

Negative impact on general health



Associated with significant medical and dental care costs



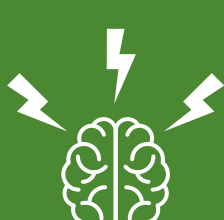
Patients with perio and systemic diseases share common risk factors



Smoking



Poor diet



Stress



Hypertension



Obesity



Low physical activity

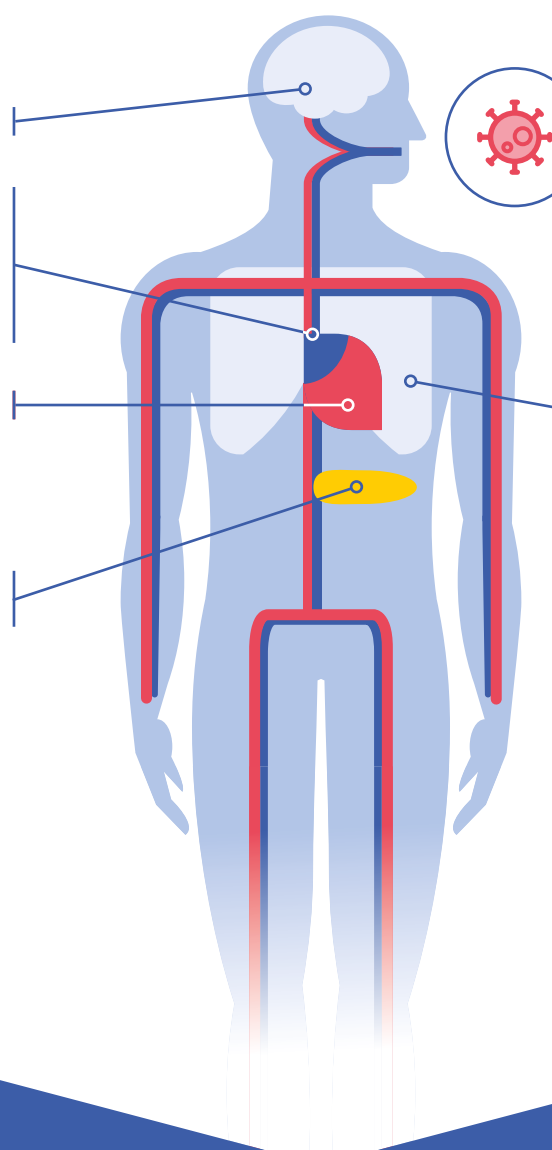
Associations between periodontitis and systemic diseases

CVD:

- Higher risk of stroke
- Higher prevalence of atherothrombosis
- Higher prevalence of coronary artery disease
- Risk of myocardial infarction

Diabetes:

- Increased risk of developing type 2 diabetes



Covid-19:

- Higher severity of Covid-19

Respiratory disease:

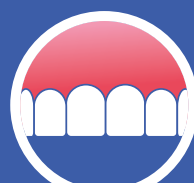
- Associated with 5% lower functional lung capacity
- Associated with a higher risk of COPD & obstructive sleep apnea

Look at your patients' oral health

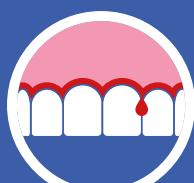
If your patient has a systemic disease, ask the following:

1. Do your **gums bleed** when you brush your teeth?
2. Have your teeth changed place or **become longer**?
3. Do you have **bad breath**?
4. Do your teeth feel wobbly or have you **lost teeth** spontaneously?
5. Do you **smoke**?
6. Has anyone in your family **lost teeth early** in life?

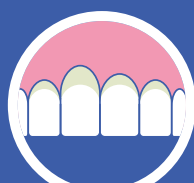
Signs of gum disease



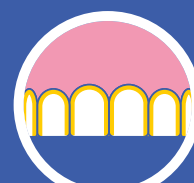
Red or swollen gums



Bleeding gums or blood in the sink after tooth brushing



Longer looking teeth



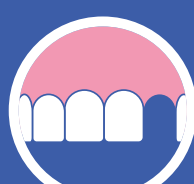
Calculus (tartar) on teeth



Bad breath



Increasing spaces between teeth or loose teeth



Tooth loss

Family doctors and oral health providers working together can save teeth and lives



Periodontitis is **preventable**



Periodontitis is **treatable** and **teeth can be maintained** for life



Perio & Family Doctors



Inform your patients about the risks of poor oral health



Look at your patients' oral health



Refer your patients with systemic diseases to their oral health providers



Share your patients' history with their oral health providers